



Brew Up! Industrial Collections Network - 4 July 2024



Ian Bapty, Museum Development Adviser and North East Regional Lead
ian.bapty@museumdevelopmentnorth.org.uk



Alan Bentley, Museum Development Adviser
alan.bentley@museumdevelopmentnorth.org.uk



MD North: Our Purpose

Museum Development North will enable strong, agile museums to contribute to the distinctive life, cultures and identity of the North of England and be widely valued for their transformational impact.

- We will challenge museums in the North of England to be the best they can be, for everyone.
- We will empower museums to be sustainable, inclusive and dynamic, having a positive impact on people, communities and society.
- We will create opportunities for museums to connect, collaborate and grow.



MD North: Our Offer

- Support
 - Every museum has a named contact at MD North
 - Site or Service specific support and advice focussing on your needs
 - Review to help identify development needs
 - Specialist collections care advice
 - Technical Accreditation advice
- Training and Learning Programmes
 - Elevenses with MD North
 - Needs based responsive training events
 - Support for networks and partnerships
 - Collections Management Programme
 - Roots & Branches Programme: Carbon Literacy and Seeds for Action
 - Innovation Programme
 - Finance and fundraising Programme



MD North: Our Grants

- Open Grants – now open
 - Grants of <£5,000
 - Three rounds over two years with deadlines in June 2024, September 2024, and April 2025
 - Investment to implement advice, test ways of working and make good things happen
 - For projects that respond to ACE Investment Principles
- Strategic Grants – now open
 - Grants of up to £1,500
 - Launch in June
 - Focus on implementing actions coming from previous MD support and programmes
 - For projects that respond to specific ACE Investment Principles
- CPD Bursaries – now open
 - Applications up to £500 for individual CPD
 - Applications up to £2,000 for organisational and network cohorts
 - Available June to December



Funding Updates

- Arts Council – National Lottery Project Grants £1000 to £100,000
 - Split £30,000 and under and £30,000 to £100,000
 - Unlocking Collections [Unlocking Collections and Project Grants - Information sheet.pdf \(artscouncil.org.uk\)](#)
 - Covering projects that meet the investment principles
- NLHF
 - £10,000 to £250,000 and £250,000 to £10 Million
 - Four investment principles
 - Saving Heritage
 - Protecting the Environment
 - Inclusion, access and participation
 - Organisational Sustainability



MD North: Communications

- Visit our website
 - www.museumdevelopmentnorth.org.uk
- Our weekly newsletter – sign up is straight forward and quick
 - <http://eepurl.com/iMx1pl>
 - We are also looking for your news please send to news@museumdevelopmentnorth.org.uk
- Follow us on social media
 - <https://twitter.com/MusDevNorth>
 - <https://www.linkedin.com/company/museum-development-north/>



MD North: Opportunities for you

- Museocycle
 - Museum version of freecycle you can put items for disposal and ask for things for your museum
[About Museocycle – Museum Development North](#)
- Organisational Health Check
- Collections at the Heart and Get Your House In Order (GYHIO) - booking open now
- Carbon Literacy and Seeds for Action training courses - dates to be announced soon
- Accreditation refresher workshops – booking open now



Events: Forums

- Brew Up!
 - 23 September NESM Sheffield. How to build a visitor base and increase education visits
 - **do you have a project or ideas you could share?**
- MD North
 - 25 September - Sewerby Hall, Bridlington
 - 27 September - The National Museum of the Royal Navy, Hartlepool
 - 22 October - Beningbrough Hall, York
- Book [Book Events - Museum Development North](#)



Events: Elevenses - Coming Soon

- Elevenses
 - 16 July, Why care? The story of GLAM Cares
 - 24 September, Changing the sector with neurodiverse people
 - 3 October, Digital Preservation – taking stock of your current digital preservation capability



Events: Training - Coming Soon

Getting Your House in Order: Online

- Inventory and documentation planning: *17 July*
- Cataloguing: 19 September
- Loans in and out: *date to be announced*
- Documentation histories and manuals: *date to be announced*
- Audit: *date to be announced*

Accreditation Programme: Online

- Getting ready to make a return: 19 September
- Accreditation Mentor Meeting: 29 October
- Accreditation Refresher - Developing and engaging audiences: 21 November
- Book via [Book Events - Museum Development North](#)



MD North: Find out More

- Visit our website
 - www.museumdevelopmentnorth.org.uk
- Sign up to our weekly newsletter
 - <http://eepurl.com/iMx1pl>
- Follow us on social media
 - <https://twitter.com/MusDevNorth>
 - <https://www.linkedin.com/company/museum-development-north/>



Kate Harland

**Museum and Heritage Manager, West
Cheshire Museums**

Introduction to the Lion Salt Works



PART OF
**WEST CHESHIRE
MUSEUMS**

THE LION SALT WORKS

Museums Development North

Brew Up 4th July 2024

Kate Harland

Museums and Heritage Manager
West Cheshire Museums



Stretton
WATERMILL



GROSVENOR
MUSEUM



LION
SALT
WORKS



WEAVER HALL
Museum & Workhouse



Historic England



LION
Salt Works
TRUST



Cheshire West
and Chester



© Derek Randall
www.derekrandallphotography.com

The Story of Cheshire











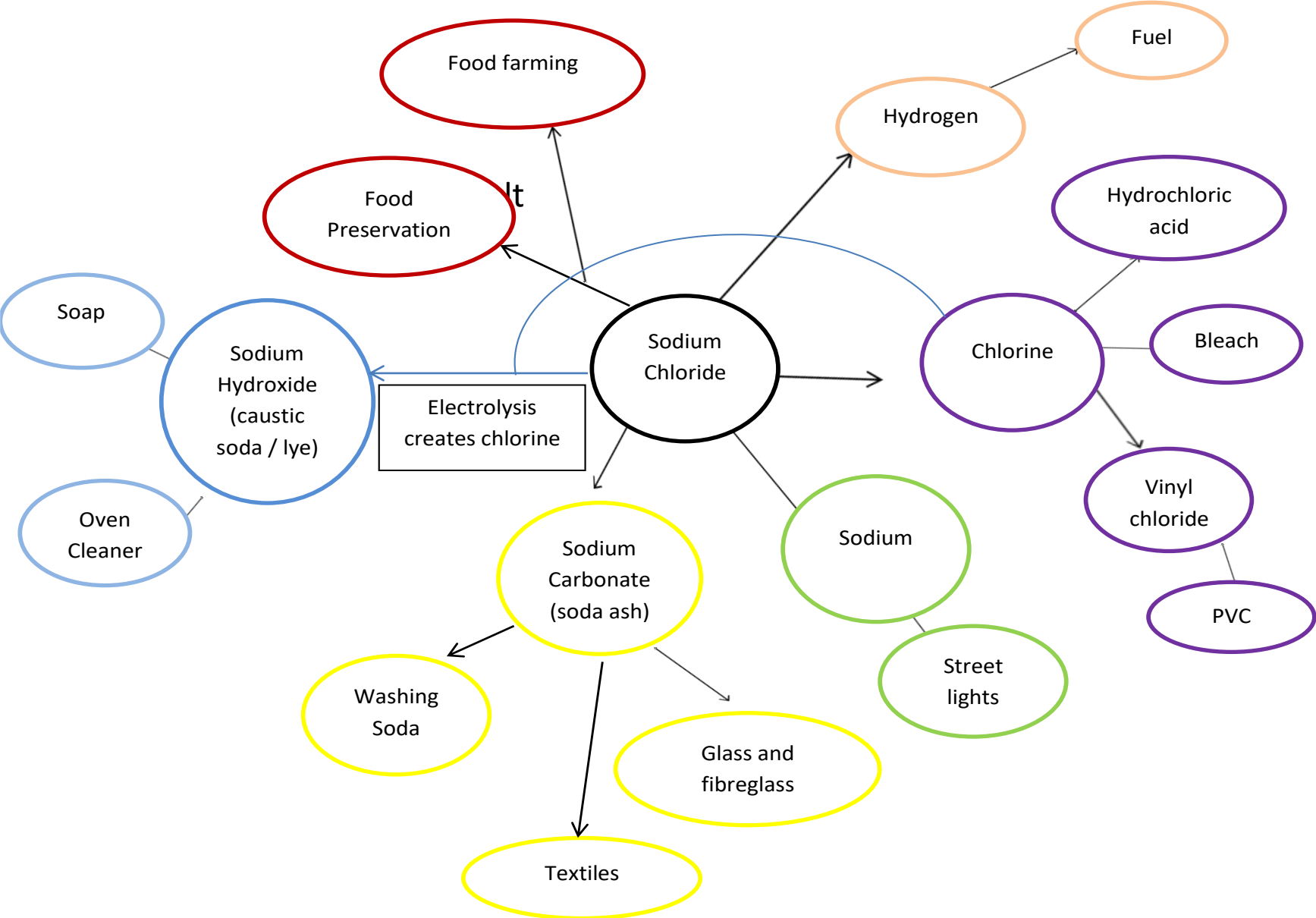
Dangerous Building
Keep out



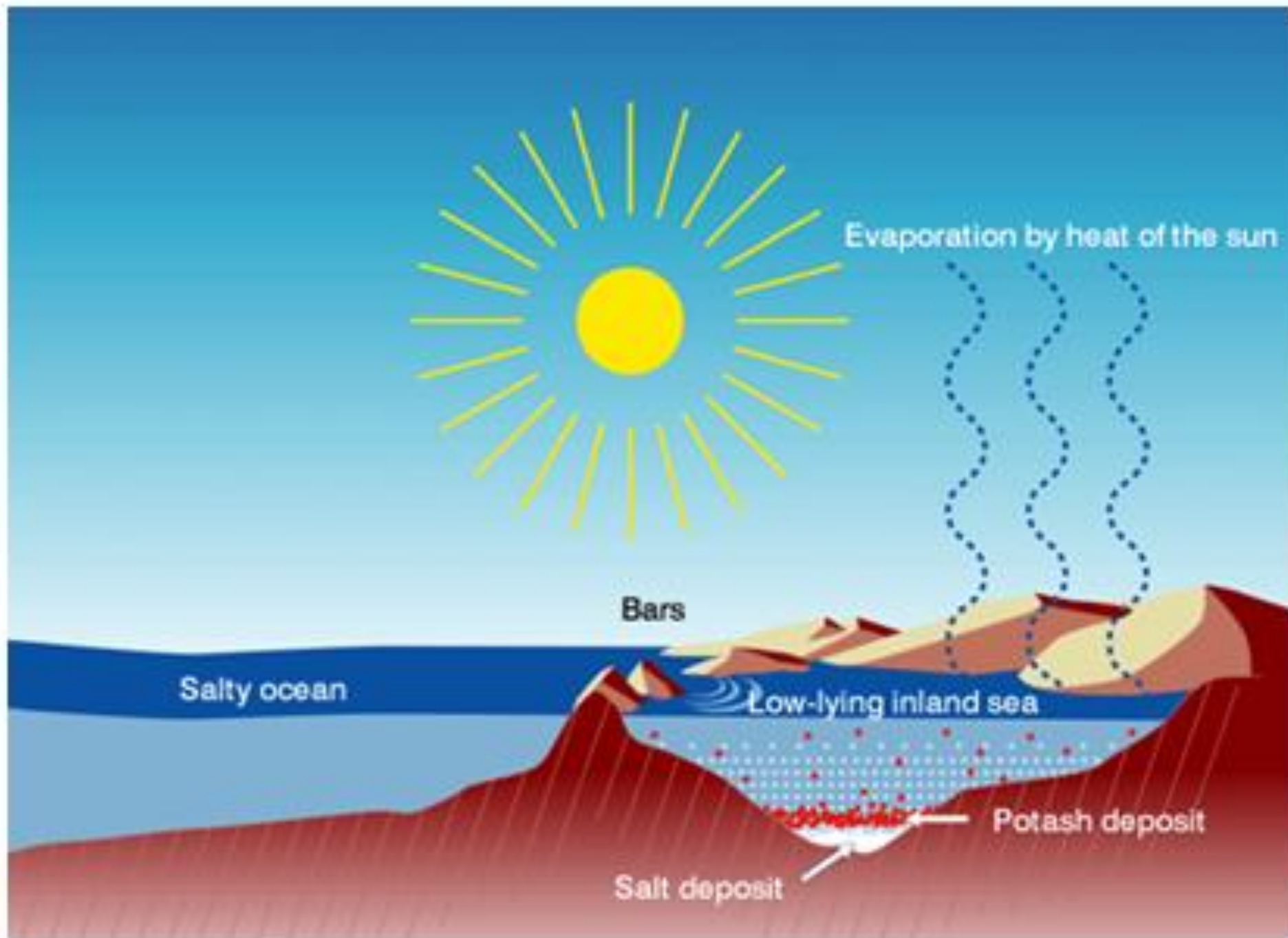




SODIUM CHLORIDE









Pangaea

PANGAEA
200 million years ago



North America
Eurasia
South America
Africa
Antarctica
Australia



Laurasia

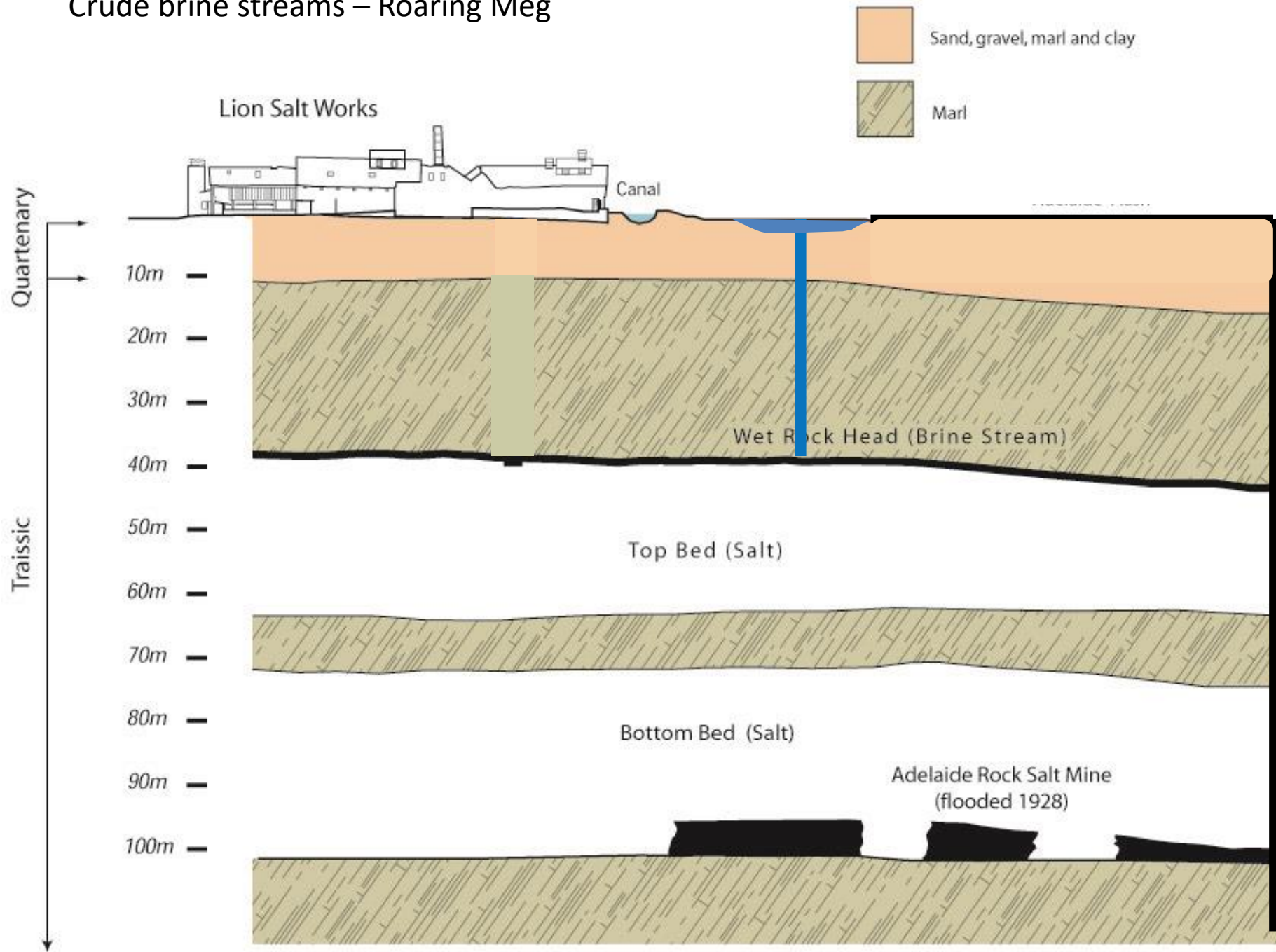
Gondwana

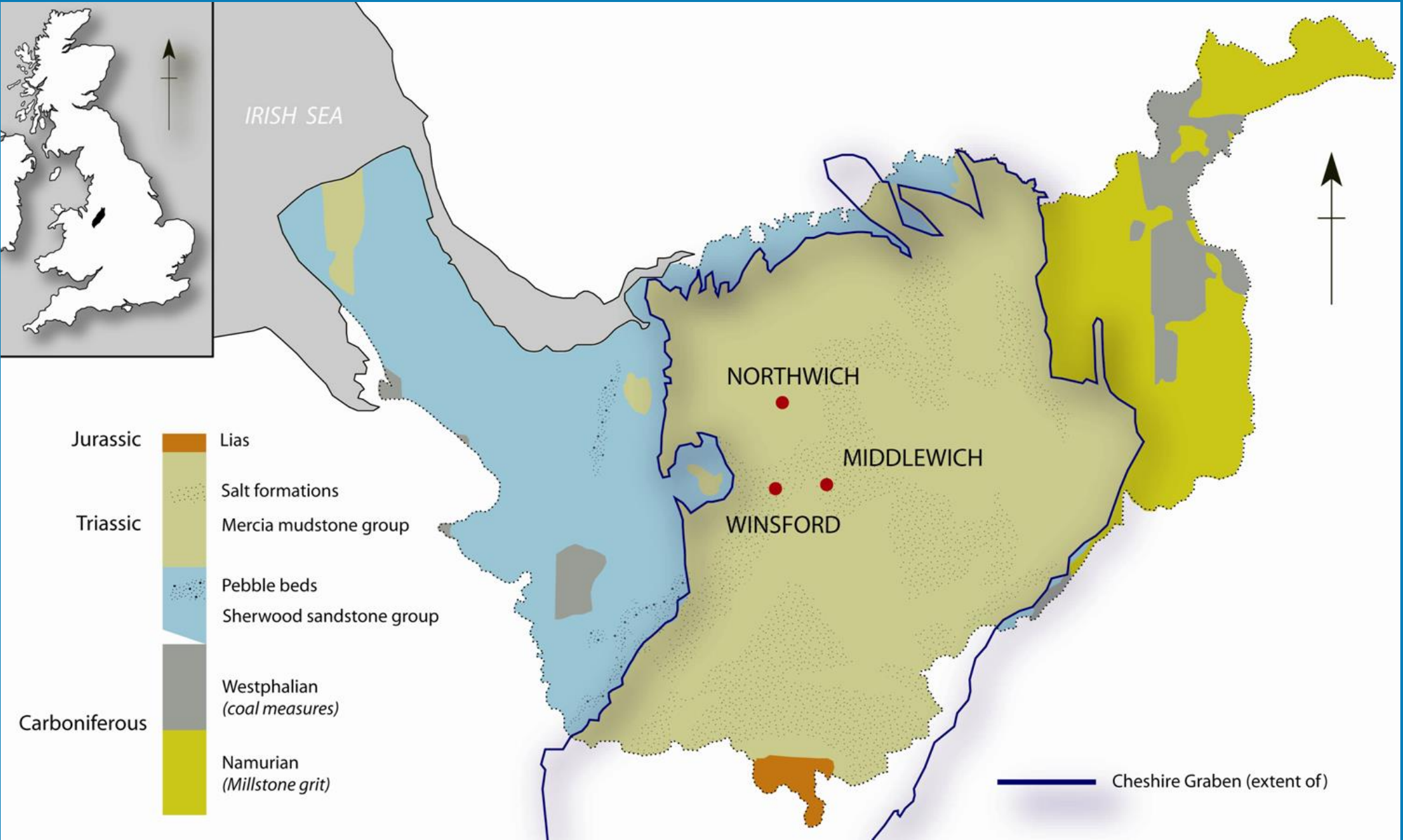
LAURASIA & GONDWANA
120 million years ago



North America
Eurasia
South America
Africa
Antarctica
Australia

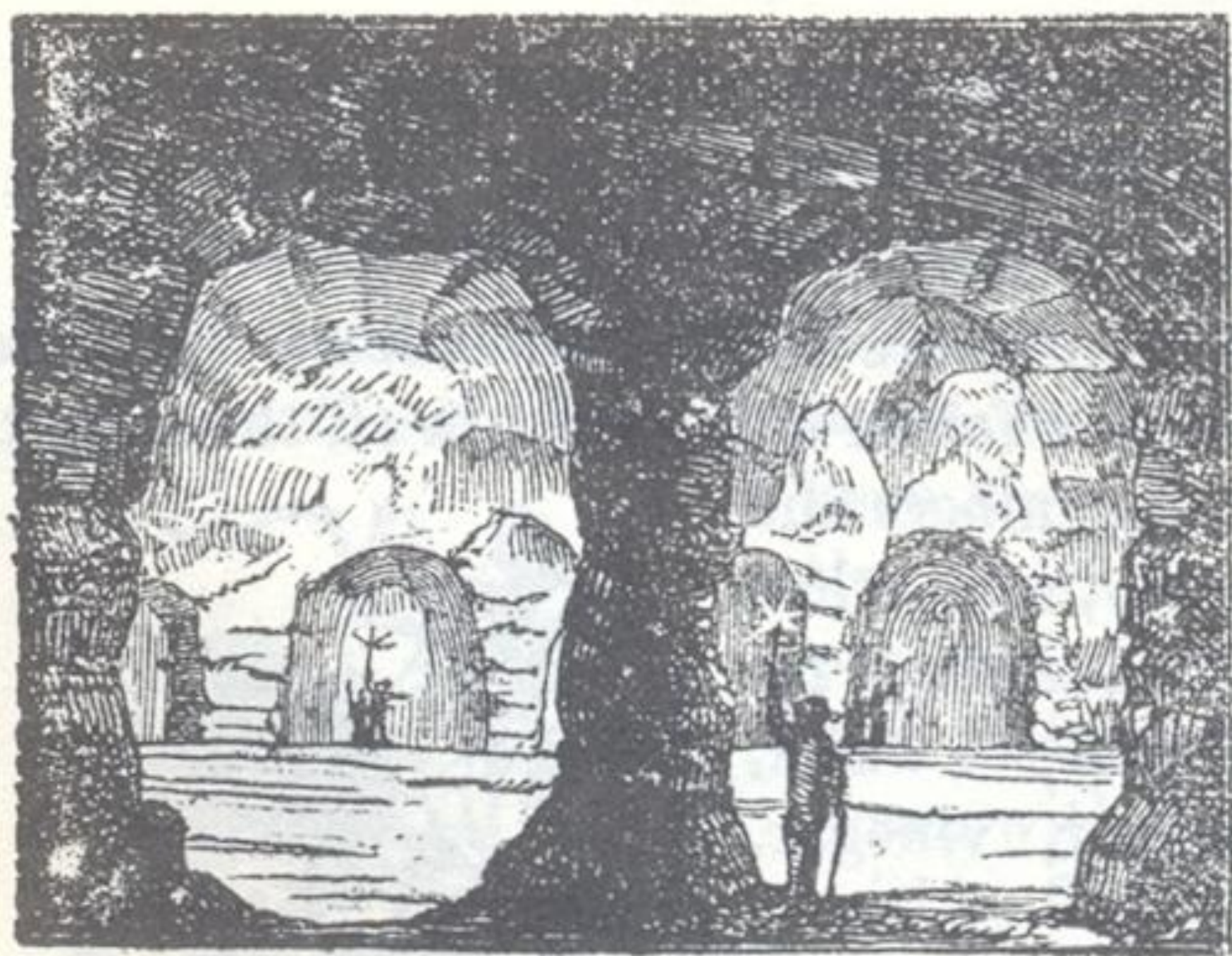
Crude brine streams – Roaring Meg





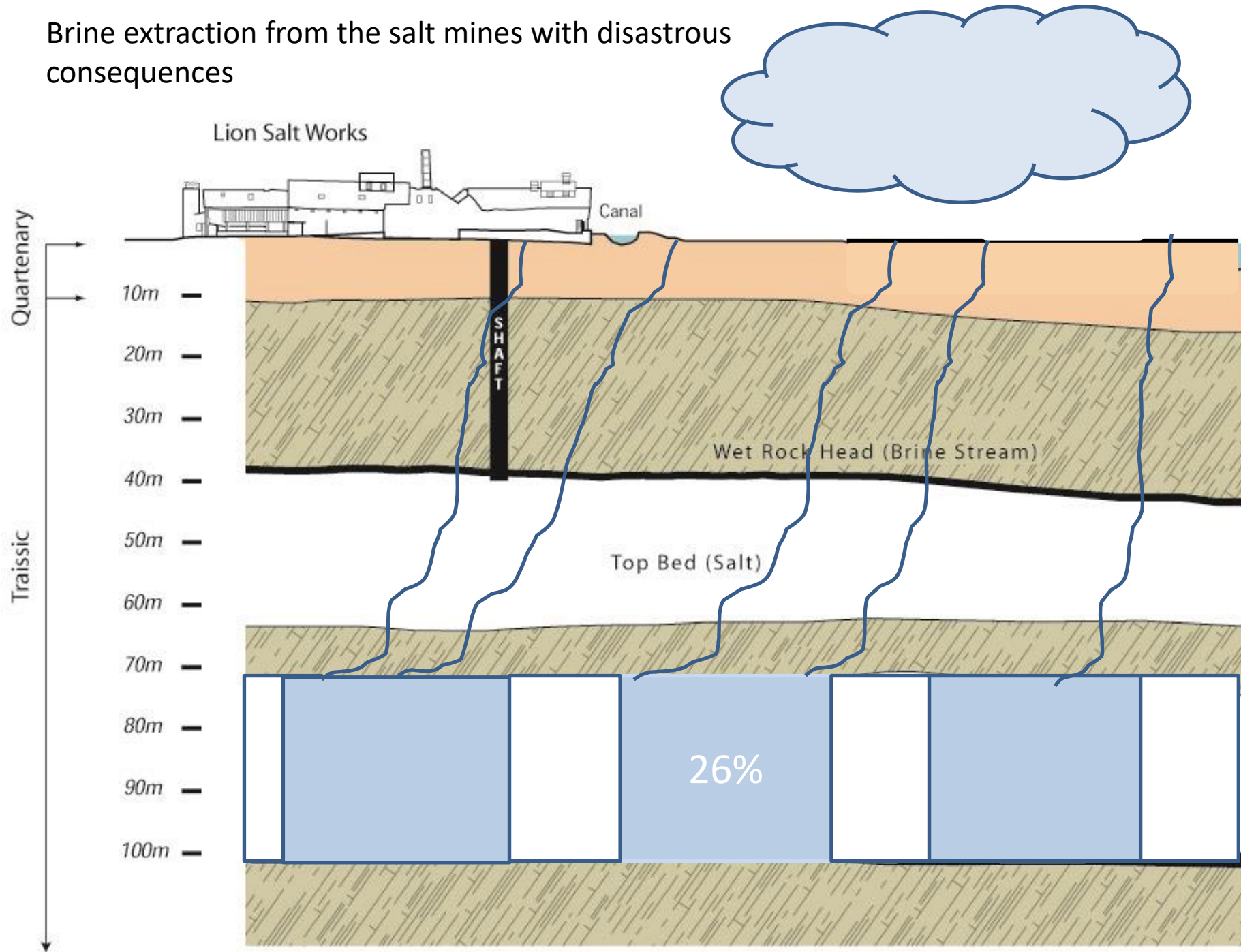
Brine springs and early salt production





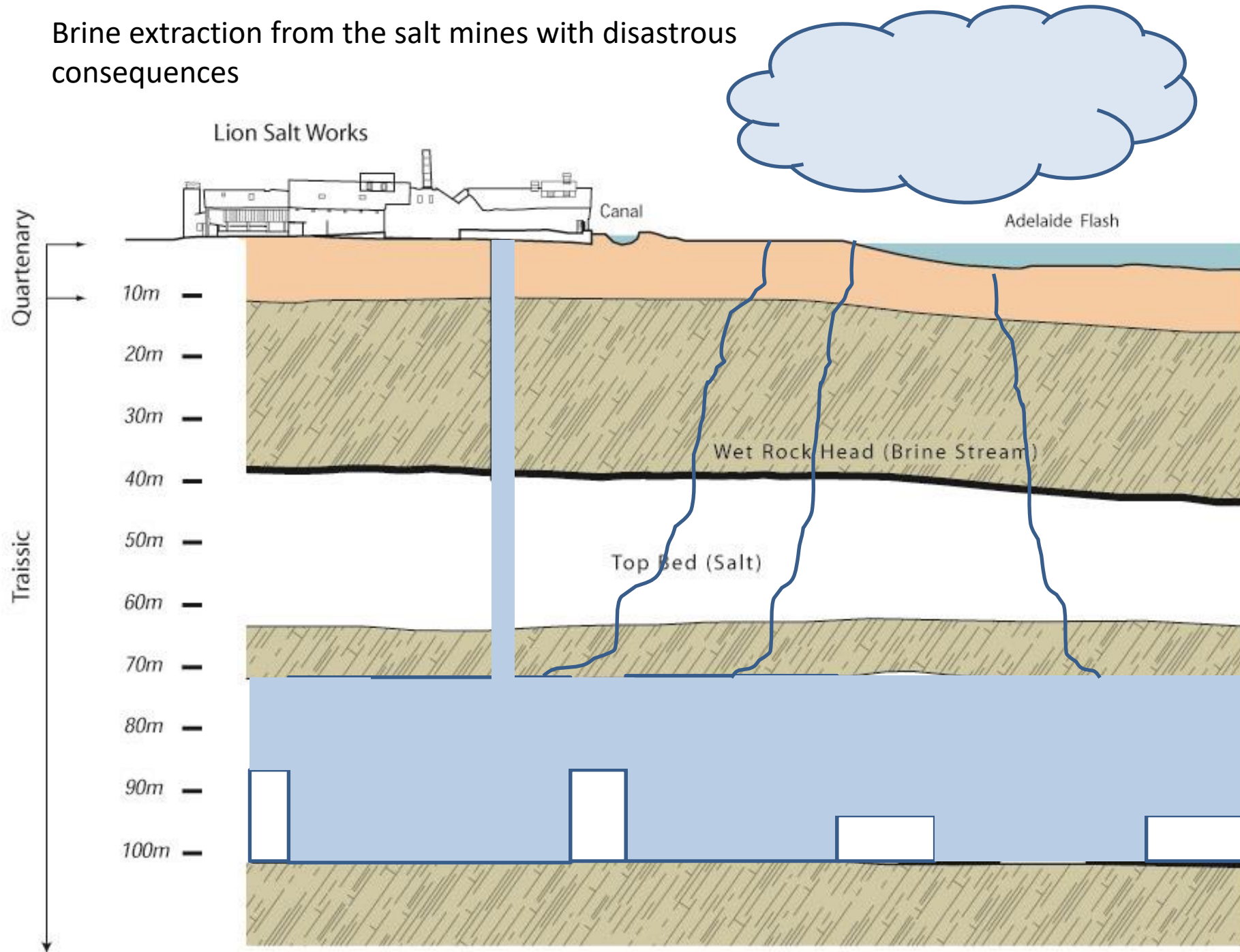
SALT-MINE AT NORTHWICH.

Brine extraction from the salt mines with disastrous consequences





Brine extraction from the salt mines with disastrous consequences







Subsidence. Lefrwich.



MOVING THE BRIDGE INN NORTHWICH. THE START



ispegi Ph
An







Eddy Foster

Head of Historic Engineering, Sheffield

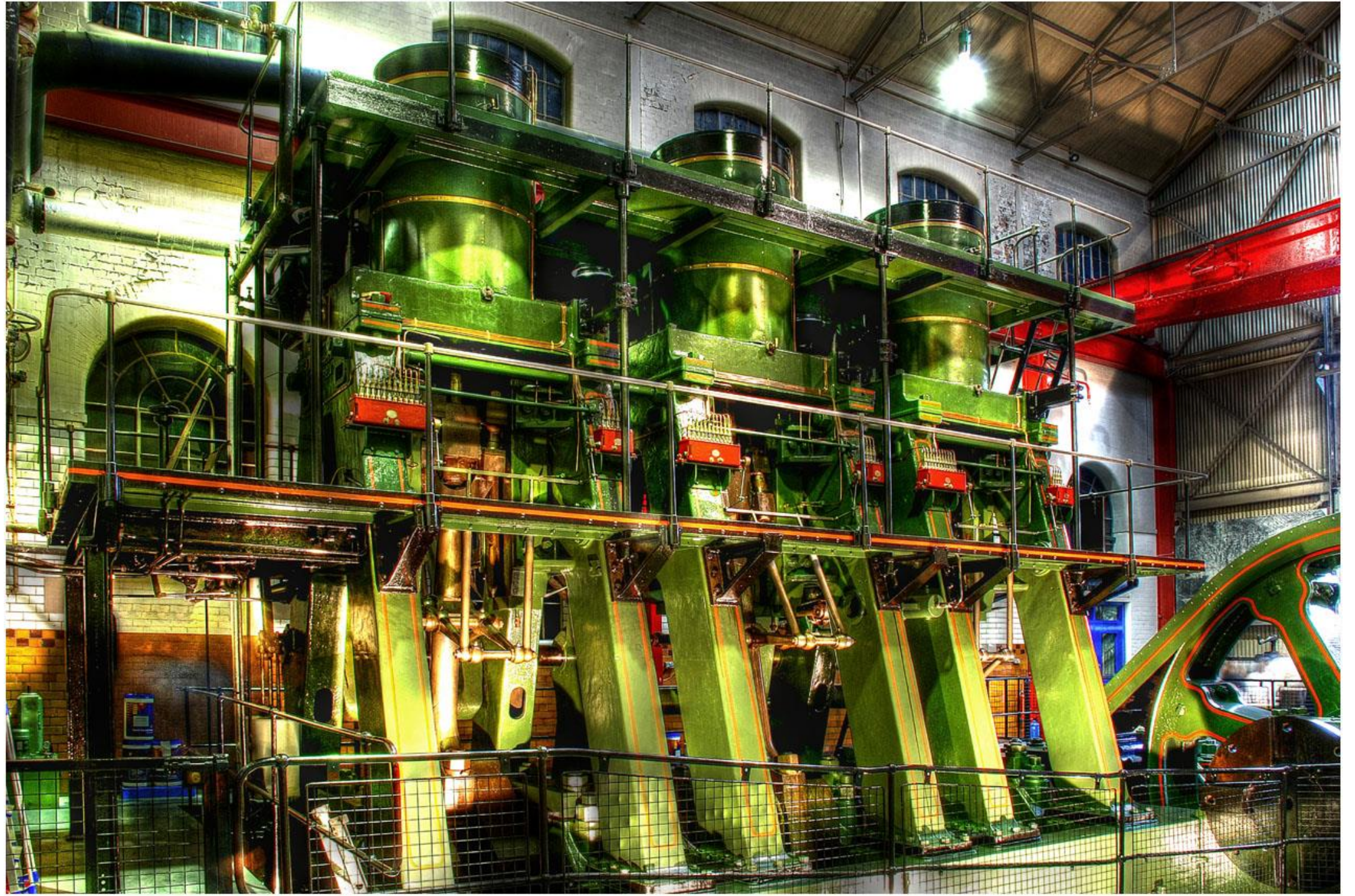
Museums Trust

Engines, cars and aircon. How to run greener?



Running exhibits

Carbon and cost cutting!



Some figures

- 12000hp
- 420 tons in weight.
- 100+ tons of moving iron and steel.
- Needs to be hot to run.
- It still runs using saturated steam at 100Psi.
- Takes two hours to warm through.
- But it's our unique selling point and people are awestruck by it.
- It inspired me as a 13 year old boy to become an engineer.



More figures

- 2016 Byworth Yorkshireman package steam boiler.
- 6000Kg/hr steam production.
- The burner can go to 4500Kwh
- Domestic boilers in your home are around 45Kwh
- 6 inch gas supply pipe and a gas booster forcing gas to our burner.
- We boil around 4000 litres of water away to steam each day we run.

Surprisingly the River Don
Engine is not our most
expensive use of energy!

Air handling and conditioning systems at our other sites use more energy per year than the River Don Engine.

So what are we doing?

Staff innovation forum working group.

Staff from all departments volunteered.

16 of us met to brain storm ideas focused on three topics

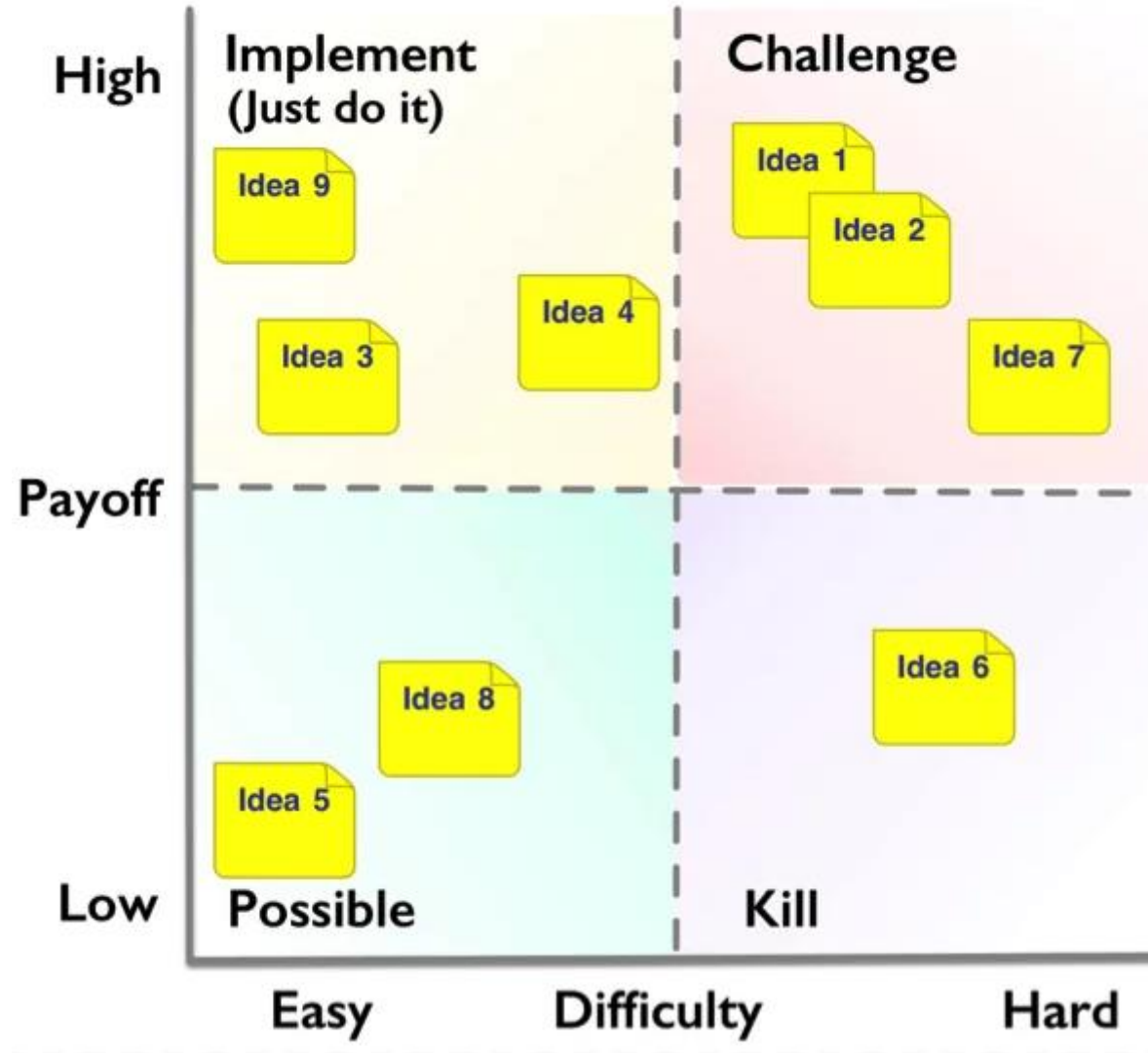
Cost saving and carbon footprint

Income generation

Customer experience improvement

We came up with over 120 ideas
in one and a half hours.

Idea	Worth Pursuing	Investment required?	Next steps
More LED lamp conversion	yes	yes SCC	This is being looked at as a result of the energy audits, with possible SCC grant for funding
Sell museum experience days	Yes	No	This has been done with effort from Engineering and comms, however only 1 sale so far, however the experience is going ahead and perhaps pricing to be modified.
Paid for tours Acres Hill	Yes	No	This is being marketed. Not a huge amount of income to be generated
Annual Museum event pass - invites to openings, Camra, Xmas Market, tour, retail discount, sneak previews?	Yes	No	Potential to link in with Friends scheme and how we can promote this as a gift idea. Think about exactly what they are getting. Review to be undertaken once HL settled into the role.
Charge for admission at site	no	small	This is reviewed on an ongoing basis, does not currently make sense to pursue given the drop in visitor numbers it could cause. Our efforts are better trying to increase donations from those who can afford to donate.
Turn off plant when not necessary		no	This is being looked at. Analysis performed on energy usage across the sites at different times of day and night and meeting scheduled wc 16/1 tp discuss further
Charges for events e.g.trail, quiz	yes	no	This could be done through the shop. Inclusivity considerations and could we use this form to capture contact details. Look at targeting schools where we could give golden tickets which they could use instead of paying.
Coporate day/evening at Weston Park with corporate team building treasure hunt type activity and cross sell with corporate sponsorship	yes	yes	One to look at in the future - needs more detailed thought as to how we compare to other venues doing this
Explore grants for carbon reduction works - may be ongoing utilities savings...		yes - SCC funded	Sharing energy audit outcomes with SCC and they have suggested there is grant funding available
Procure energy through SCC		no	done
Evening events attracting young people with disposable income – bars	yes		We are now seriously looking at extending the Christmas marketed to include the Friday for 2023. Lates programme does already offer evening with a late bar
Community cinema (or outdoor) at KIM upper gallery	no		We have tried this. A lot of work involved and a lot of competition locally. This has been tried in the past and wasn't very successful.
Summer event eg Chocolate, cocktails, food festival, themed	yes	yes and resource heavy	Scope out what this could be - what is the thing which could be which would be an annual event. Need to be aware of staff capacity here.
More public programme	already done		We already do as much public programme as we have capacity for and this does not generate a large amount of income for the costs involved
Children's birthday parties	maybe	minimal	Look at what our current offering is. Potential package incl activity and museum. Eg Egyptian themed, however not a great income generator
Adjust wedding events offerings to accommodate smaller, less expensive events	yes	some	We are now offering lower cost packaged weddings to help couples keep costs under control, however there has so far been limited interest in these deal, with couples favouring discounts for shorter term availability bookings. Still work to do in refining our offer and making sure it matches demand
Live music event with paid admission and in house bar – SOFA sounds?	maybe	minimal	potential at MG? This does take place to an extent with lates. We have tried this in the past with limited success
Regular cellar tour at KIM	yes	minimal	H&S issues so only small groups. Not very accessible. To add to experience days type offering as a shorter experience in small groups at a lower price.
Sensors on lighting and escalators	yes	yes	The escalators ideally need replacing in the short term and this would be done with a more energy efficient model. SCC are looking into funding new escalators estimated cost £200k.
Install PV panels, sell energy back to grid	maybe		estimated investment £80k per buildings against annual savings of £10-15k. Also the complication of old leaky roofs to contend with. This is a very small saving on our total energy costs
School prom events	no		Could be difficult to manage
Generate power from exhibits	?	?	Not clear on this one
			potentially have a code where people can download and have dispoosable headphones. Could



Highlights of progress since the forum

- Energy audits have now taken place at Millennium and Weston Park with some investment to save opportunity and a better understanding of our energy usage.
- We have joined Sheffield City Council energy procurement to ensure we are accessing the most competitive rates.
- Museums experience days have been launched.
- More marketing of Friends scheme over the festive period.
- Quotes received for car charging points at Abbeydale and Kelham and income analysis performed.
- Talks progressing with car parking providers to establish feasibility of charging at our sites for car parking.

Additionally

- We are trialling the turning off of air handling in any empty spaces and are monitoring humidity and temperature in those areas and adjoining areas and also monitoring power usage to measure savings.
- MEND application for new air handling with better functionality after findings. (Millennium gallery)
- We have chosen to not open on Mondays throughout the year. This saves a little on staffing and clarifies our messaging across all sites.
- We now only run the River Don Engine on our busiest days Thursdays to Sunday.

What have we done
previously that can be
expanded

Small engine conversions.



















Car fuel economy

Getting double figures!

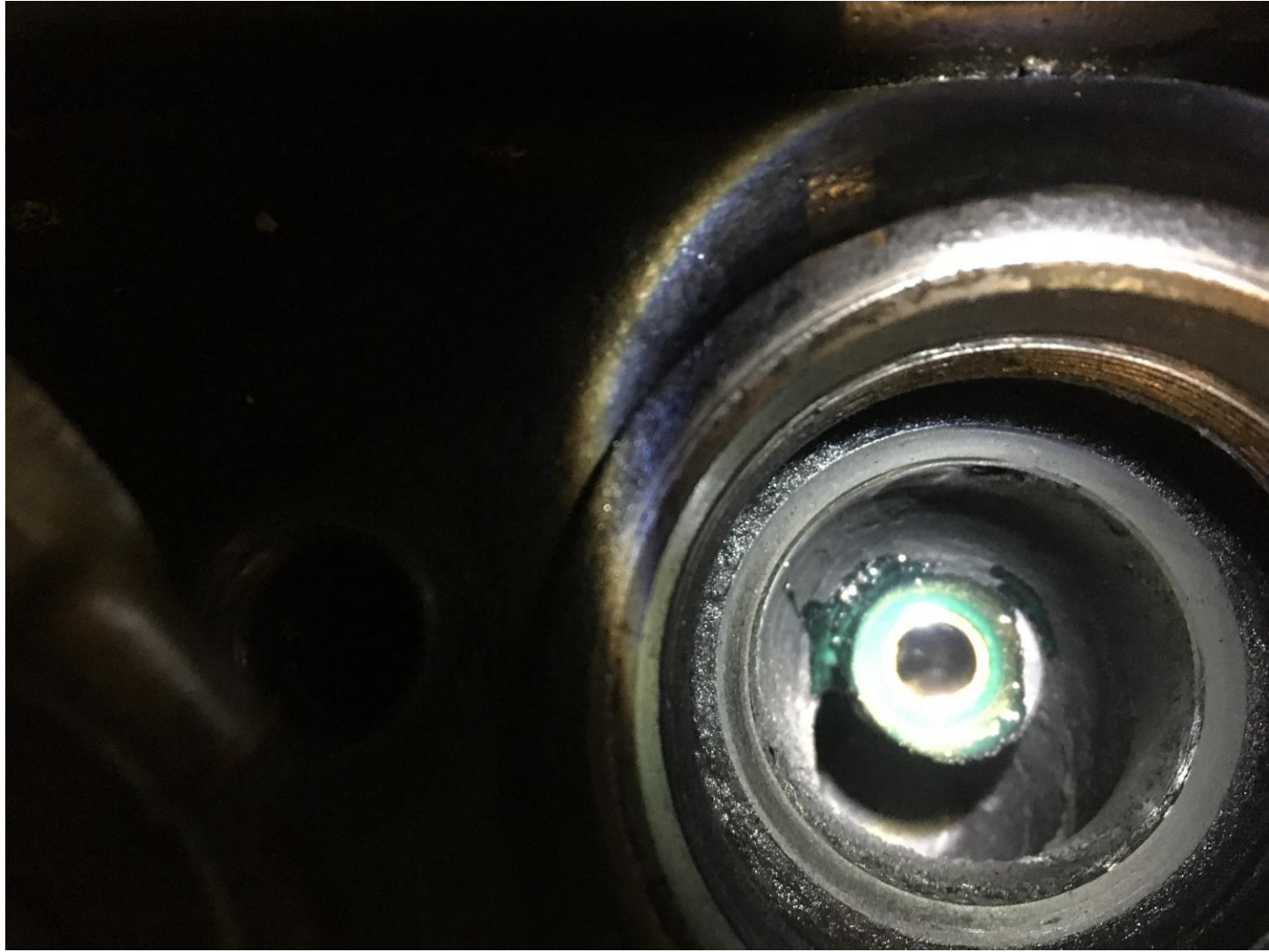


1920 Sheffield Simplex SSK 50HP

This thing drinks petrol!
Six cylinder 8 litre engine.
But we've made it better.







With corrected fuel air mix and masses
more compression, the engine now
starts and runs much more efficiently.

We also go out to less shows than we have done
previously.

We prioritise busier higher impact shows.

Any Questions

Eddy Foster

Head of Historic Engineering

Sheffield Museums Trust

eddy.foster@sheffieldmuseums.org.uk

Tour of the museum and lunch



Poppy Garrett

Assistant Curator, West Cheshire Museums

Festival for the Future





FESTIVAL FOR THE FUTURE

WEST CHESHIRE
MUSEUMS

 Cheshire West
and Chester



Carbon Literacy Project



















DJ HOOLIGAN

Greta Thunberg v. Fatboy Slim
"Right Here, Right Now"

OPEN MIC NIGHT
9 JULY 2022
7 - 10pm
The Old Library, Weston, Oxford, OX4 2DQ



@DJHooligan_Jordan



DJ Hooligan



DJ Hooligan

















With thanks to our sponsors for supporting the festival in 2022.



Supported using public funding by
**ARTS COUNCIL
ENGLAND**



and the Stubbs Trust

Jean Milton

Director of Heritage, Port Sunlight Museum

Beyond the Sunlight



Port Sunlight Village



Brew Up – Beyond Sunlight



Environmental Sustainability Plan

Biodiversity plan

Lyceum

Learning programme (Royal Society, Natural History Museum)

Resident Engagement

Origins



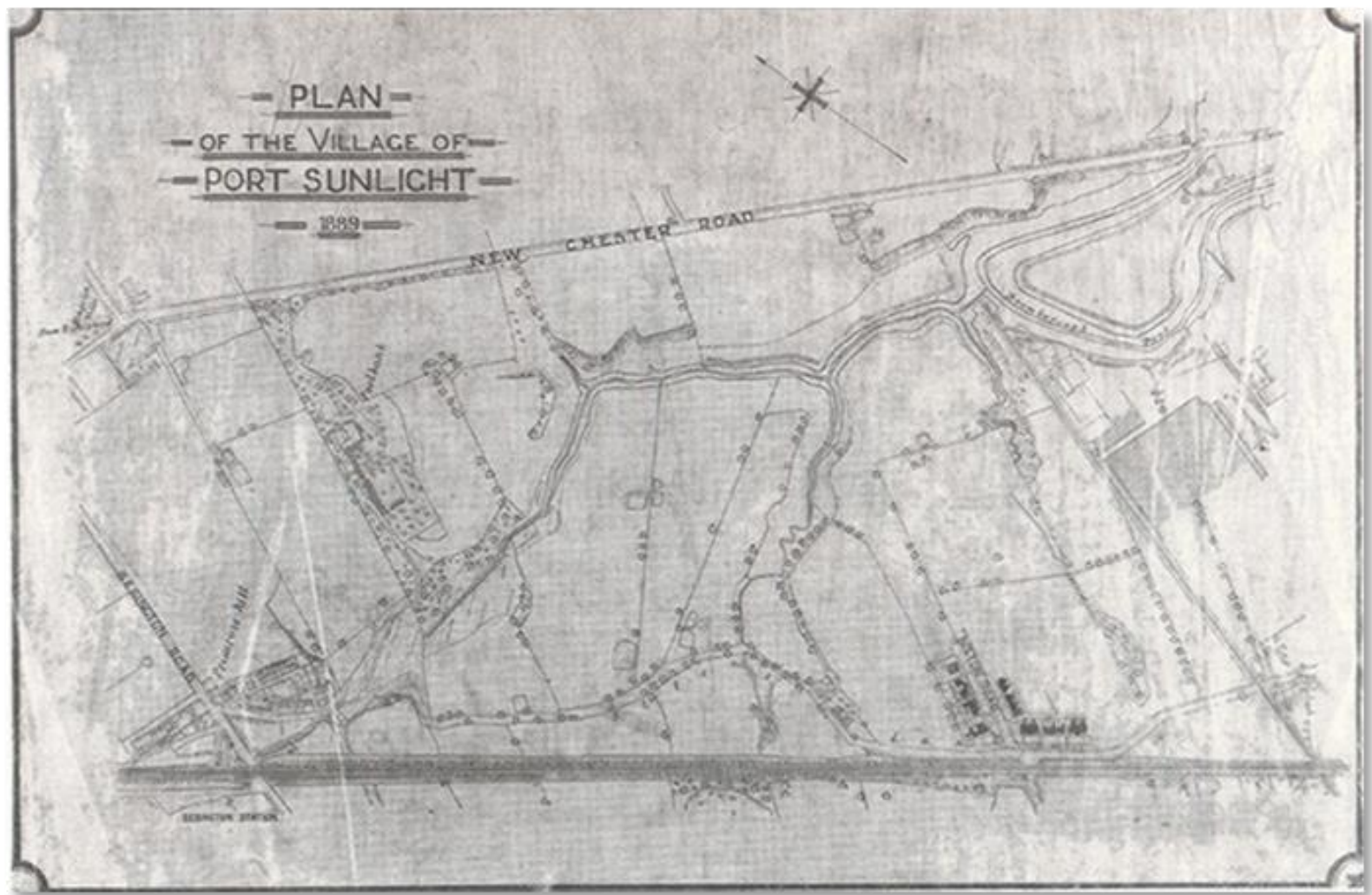


Port Sunlight
VILLAGE TRUST



— PLAN —
— OF THE VILLAGE OF —
— PORT SUNLIGHT —

— 1889 —



PSVT - Who we are

Port Sunlight is a Conservation Area most residential properties, public buildings and monuments are Grade II listed, the war memorial is Grade I listed.

These provisions provide statutory protection to the village enforced by the local planning authority (LPA) Wirral Council. There are restrictive covenants in the title deeds of all residential property.

Two sections of the landscape – The Dell, and The Diamand and The Causeway - are included in Historic England's register of Parks and Gardens of Special Historic Interest.



Ten of Port Sunlight's green spaces are also designated for protection as Urban Greenspace by Wirral Council.

As custodians of this historic village and vibrant residential community, we are conscious of how people live and interact.



Environmental Sustainability Plan



- 10 year plan to reduce PSVTs impact on the environment and increase the sustainability of the charity as a whole.



Ecological Survey and Biodiversity Plan for Port Sunlight



- Part of our commitment to arresting climate change, as set out in PSVT's 10-year Environmental Sustainability Strategy and Environmental Policy, and a priority for our stakeholders.



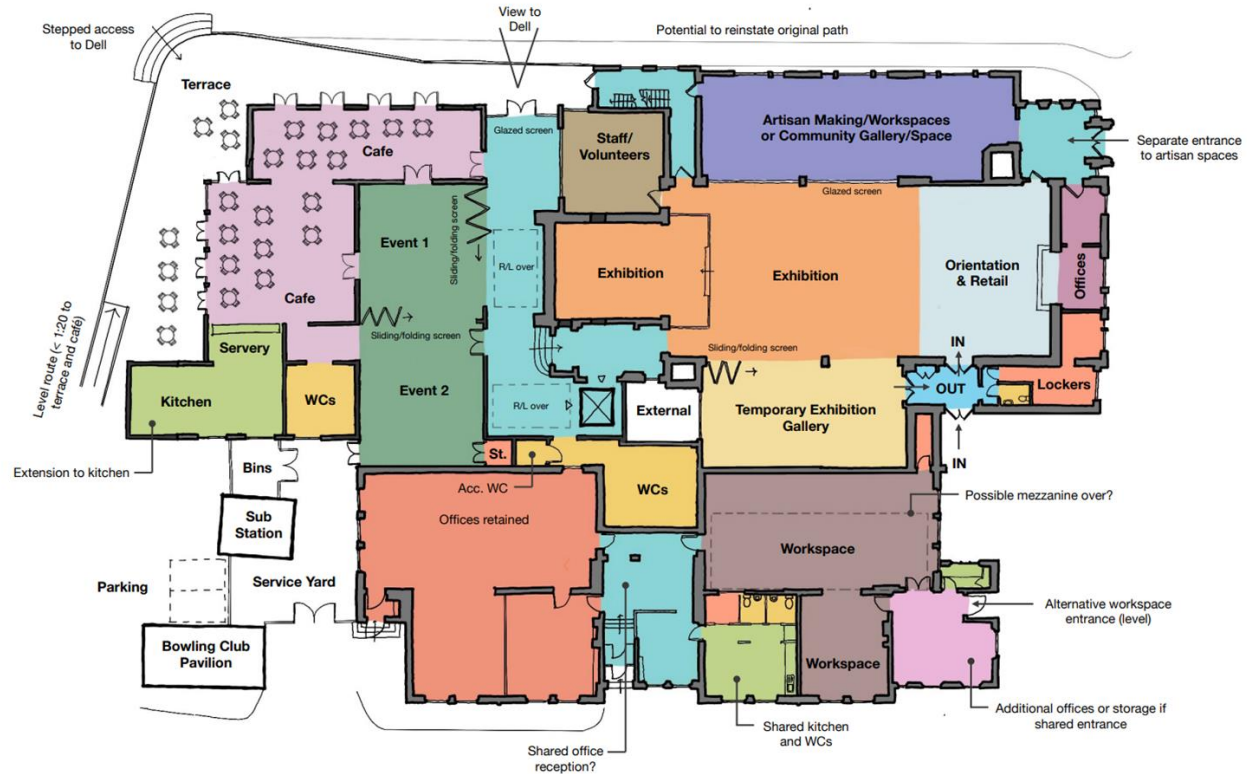
The Lyceum



Interior



Option



THE LYCEUM, PORT SUNLIGHT

107 PROPOSED GROUND FLOOR PLAN - OPTION 5

© Chambers Conservation Ltd. November 2022. Mercury House, High Street, Tattenhall, CH3 9PX

Approx 1:200 @ A3

Inspiration



THE LYCEUM, PORT SUNLIGHT

Precedent - Connecting spaces

© Chambers Conservation Ltd, February 2023. Mercury House, High Street, Tattenhall, CH3 9PX



Inspiration



THE LYCEUM, PORT SUNLIGHT

Precedent – Café & Contemporary interventions - Knitting the site together.

© Chambers Conservation Ltd. February 2023. Mercury House, High Street, Tattenhall, CH3 9PX



01753 600 400 or 01484 120 070
www.chambersconservation.com

Inspiration



THE LYCEUM, PORT SUNLIGHT

Precedent – Café & Contemporary interventions - Knitting the site together.

© Chambers Conservation Ltd, February 2023. Mercury House, High Street, Tattenhall, CH3 9PX



01246 400 000 or 01246 100 000
www.chambersconservation.com

Learning Programme



Resident Engagement



Breakout activities



Amanda Moore

**Education and Sustainability Officer, Culture
Warrington**

**Sky Garden: making a place for sustainability in
museums**



SKY GARDEN



Sky Garden: Making a Place for Sustainability in Museums

Manda Moore

Why?

**What sort of climate
activist are you?**



What we did then...



- Established an environmental sustainability policy (2021-2024)
- Changed some of our museum lighting to lower energy LEDs
- Began to think of and talk about sustainability across our different work areas
- Initiated reuse of material from exhibitions and events rather than disposal
- Secured initial funding and collaborative partnership for a ‘Sky Garden’ with Golden Square Shopping Centre. A rooftop garden linked to the museum and its collections.
- Hosted Carbon Literacy Training for regional museum staff in 2022 in collaboration with Museum Development North

From October 2023...



- Developed our 'Sky Garden' area with funding to increase biodiversity in the town centre and begin to help mitigate the effects of climate change.
- Committed to a new part time role (1 day per week) for a member of staff to drive our sustainability agenda.
- We were invited to sit on the 'Warrington Climate Emergency Commission'.
- Delivered accredited Carbon Literacy training for 15 members of our staff in partnership with Museum Development North. (In house trainer)
- Changed all museum interactives to paper free activities.
- Piloted a funded 'Wild Wellbeing' course for adults with moderate to severe mental health problems.
- Began work on calculating our organisational carbon footprint to get a good set of base line data to improve on.

How?

PARTNERS

- Golden Square Shopping Centre
- Museum Development North
- Chester University (Warrington Climate Emergency Commission)
- Julies Bicycle
- Warrington Community Gardens network

FUNDING

- Museum Development North (Green Grants & Sustainable Improvement Fund)
- Multiply Funding
- Hubub / Starbucks Funding
- Merseycare

Draft Policy & Action Plan

WHY

- To show funders and external bodies that we are serious about environmental action
- To show Culture Warrington's commitment to the climate crisis
- To support WBCs Climate Emergency Action Plan 2023
- To ensure our resilience for the future as an organisation

HOW

- Building on previous work (Green Museums Development & Leadership programme 2015, Environmental Sustainability Statement 2021-24)
- Research and development
- Consultation

WHO

- Museum Development North's Advisor, Environmental Responsibility
- Chester University's Sustainability Manager
- Warrington Climate Emergency Commission
- Board members

Main Points

Staff

Finance

Procurement

Data

Energy

Waste

Partnerships &

Communication

Travel

Feedback & Thoughts?



Next Steps

- Set up staff 'Green Action Group' to scrutinise action plan, amend staff time frames and keep track of progress. Staff from each venue & board representative
- Finish calculation of 2023/24 carbon footprint baseline data
- Apply for Museum Development North open grant to deliver against the Arts Council England's Investment Principle 3, Environmental Responsibility















Biodiversity

TESCO 12:09 63%

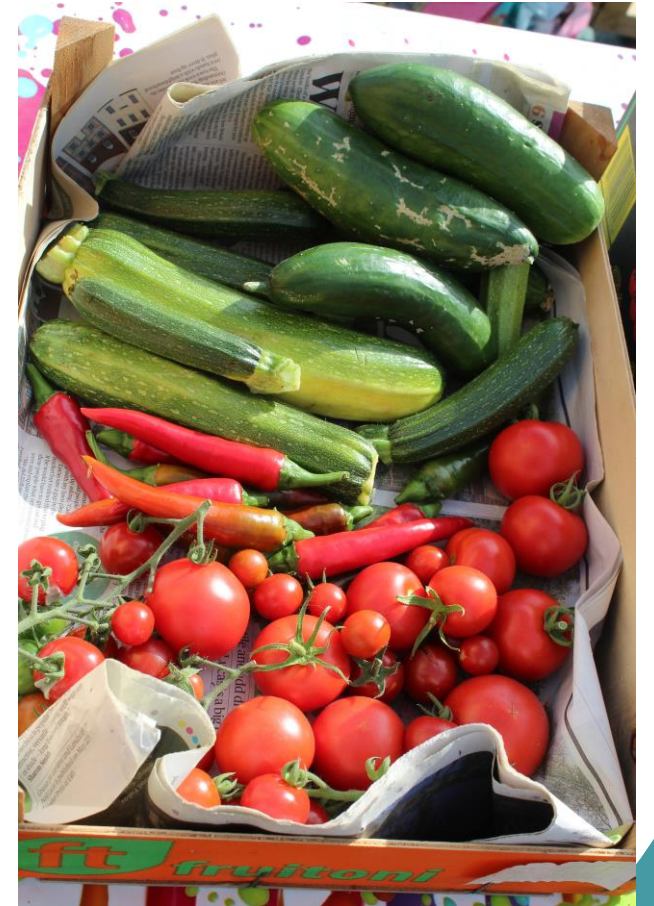
warringtonskygarden1



-  red deadnettle 3 wk ago Golden Square Warrington, Warrington,...
-  Cross Orbweaver 1 mo ago Golden Square Warrington, Warrington,...
-  White Wagtail 2 mo ago Golden Square Warrington, Warrington,...
-  Mint Moth 2 mo ago Golden Square Warrington, Warrington,...
-  Creeping buttercup 4 mo ago Golden Square Warrington, Warrington,...
-  great stinging nettle 4 mo ago Golden Square Warrington, Warrington,...
-  pineapple-weed 4 mo ago Golden Square Warrington, Warrington,...
-  Beetles 4 mo ago Golden Square Shopping Centre, Warrin...
-  *Subsection Agrestes* 4 mo ago Golden Square Shopping Centre, Warrin...
-  Common Vetch 4 mo ago Warrington WA1 1QS, UK
-  common dandelion 5 mo ago Golden Square Warrington, Warrington,...
-  Subtribu Anphodiina 5 mo ago

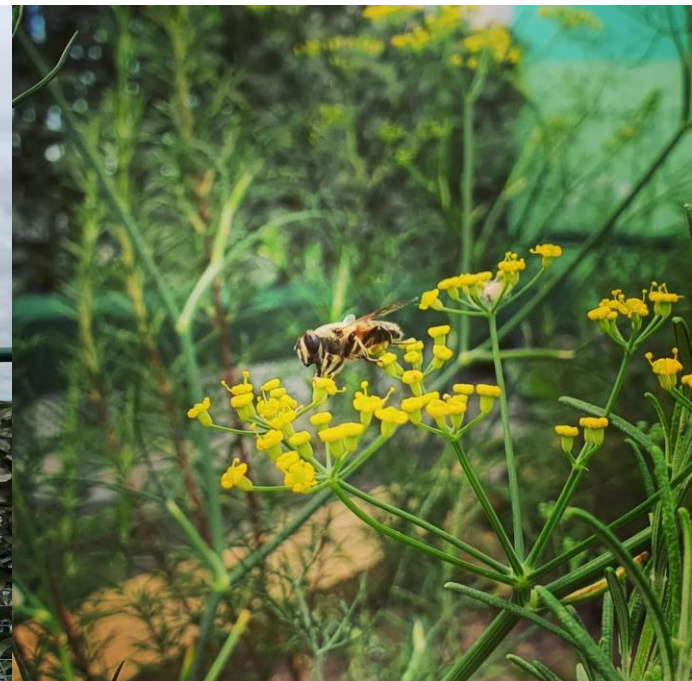


Food



Community and Volunteers







Thank You

Manda Moore

amoore@culturewarrington.org

Darren Whelan

**Technical & Facilities Manager,
Quarry Bank Mill**



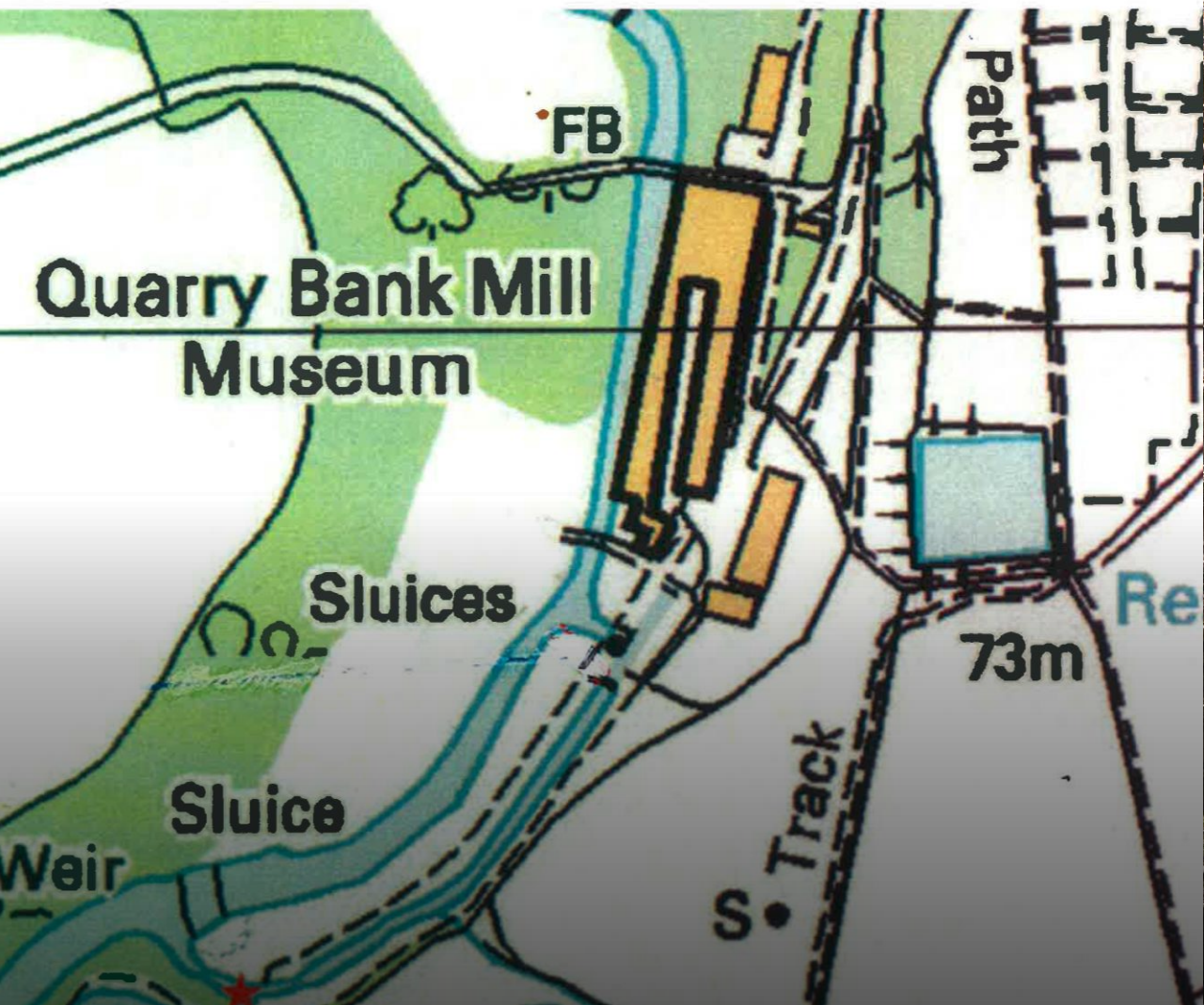
A photograph of a stone weir structure in a wooded area. The weir is built with dark, rectangular stones and has a concrete top edge. Water is flowing over the weir, creating a small pool of water in the foreground. The surrounding area is filled with bare trees and some evergreens, suggesting a winter or late autumn setting. There is some snow on the ground to the left of the weir. The text "Unintending consequences - River Bollin" is overlaid on the image in white font.

Unintending consequences - River Bollin

Darren Whalen – Facilities & Technical manager Quarry Bank



Introduction of Hydro scheme - 2014



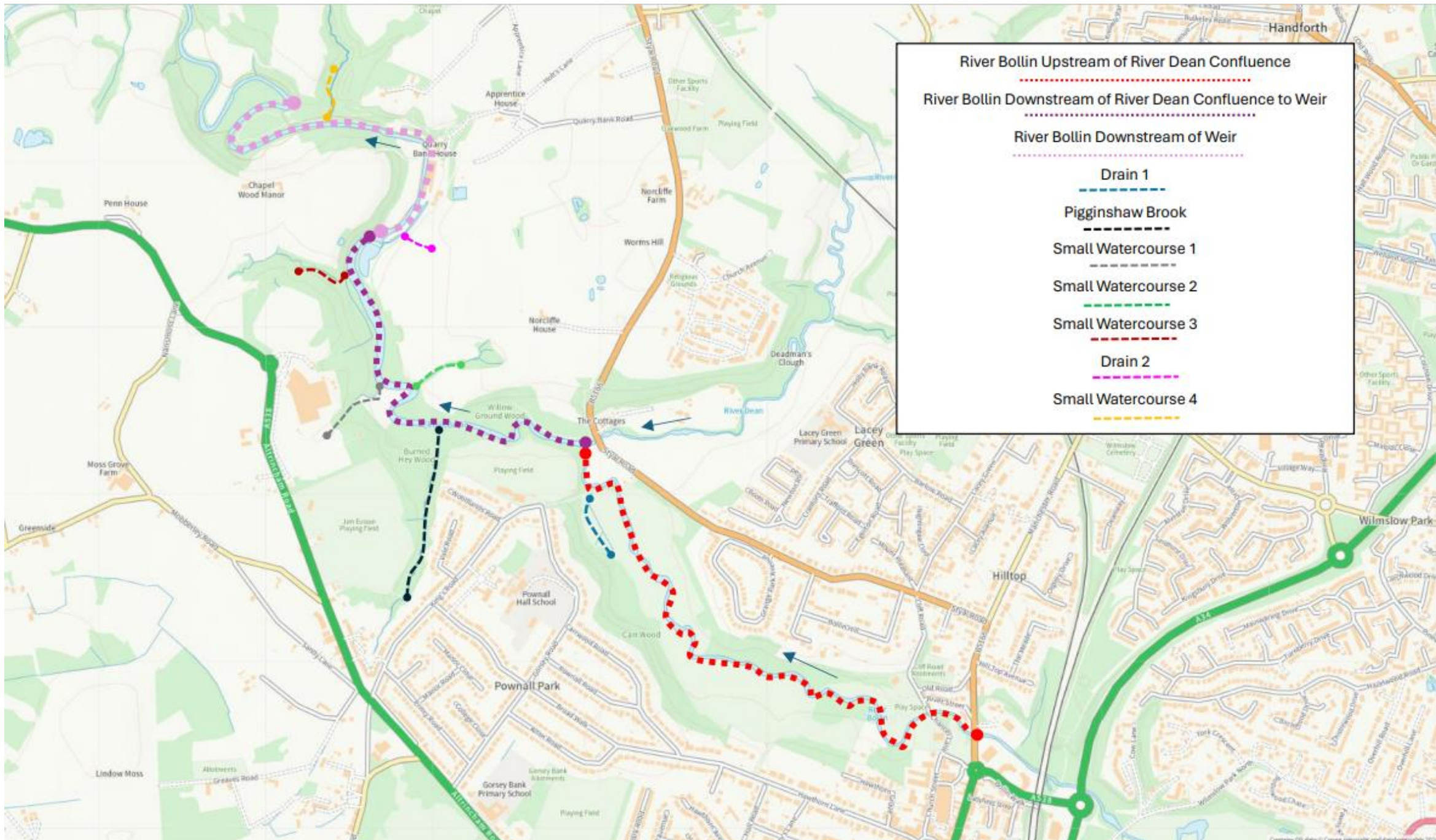
Introduction of Hydro scheme - 2014

The problem



Highest point: 82 metres. Lowest point: 53 metres. Height Difference: 29 metres. Length of Profile: 2.26 kilometres.





River Bollin Upstream of River Dean Confluence

River Bollin Downstream of River Dean Confluence to Weir

River Bollin Downstream of Weir

Drain 1



Piginshaw Brook



Small Watercourse 1



Small Watercourse 2



Small Watercourse 3



Drain 2



Small Watercourse 4



Handforth

Wilmslow Park

Hilltop

Pownall Park

Gorse Bank Primary School

Lacey Green Primary School

Lacey Green

The Cottages

Can Wood

Burned Hey Wood

Willow Ground Wood

Jeff Eason Playing Field

Chapel Wood Manor

Quarry Bank House

Penn House

Moss Grove Farm

Lindow Moss

Apprentice House

Norcliffe Farm

Norcliffe House

Worms Hill

Quay Bank Road

Quay Bank Road

Quay Bank Road

Quay Bank Road

Quay Bank Road

Quay Bank Road

Quay Bank Road

Quay Bank Road

Quay Bank Road

Quay Bank Road

Quay Bank Road

Quay Bank Road

Quay Bank Road

Quay Bank Road

Quay Bank Road

Quay Bank Road

Quay Bank Road

Quay Bank Road

Quay Bank Road

Quay Bank Road

Quay Bank Road

Quay Bank Road

Quay Bank Road

Quay Bank Road

Quay Bank Road

Quay Bank Road

Quay Bank Road

Quay Bank Road

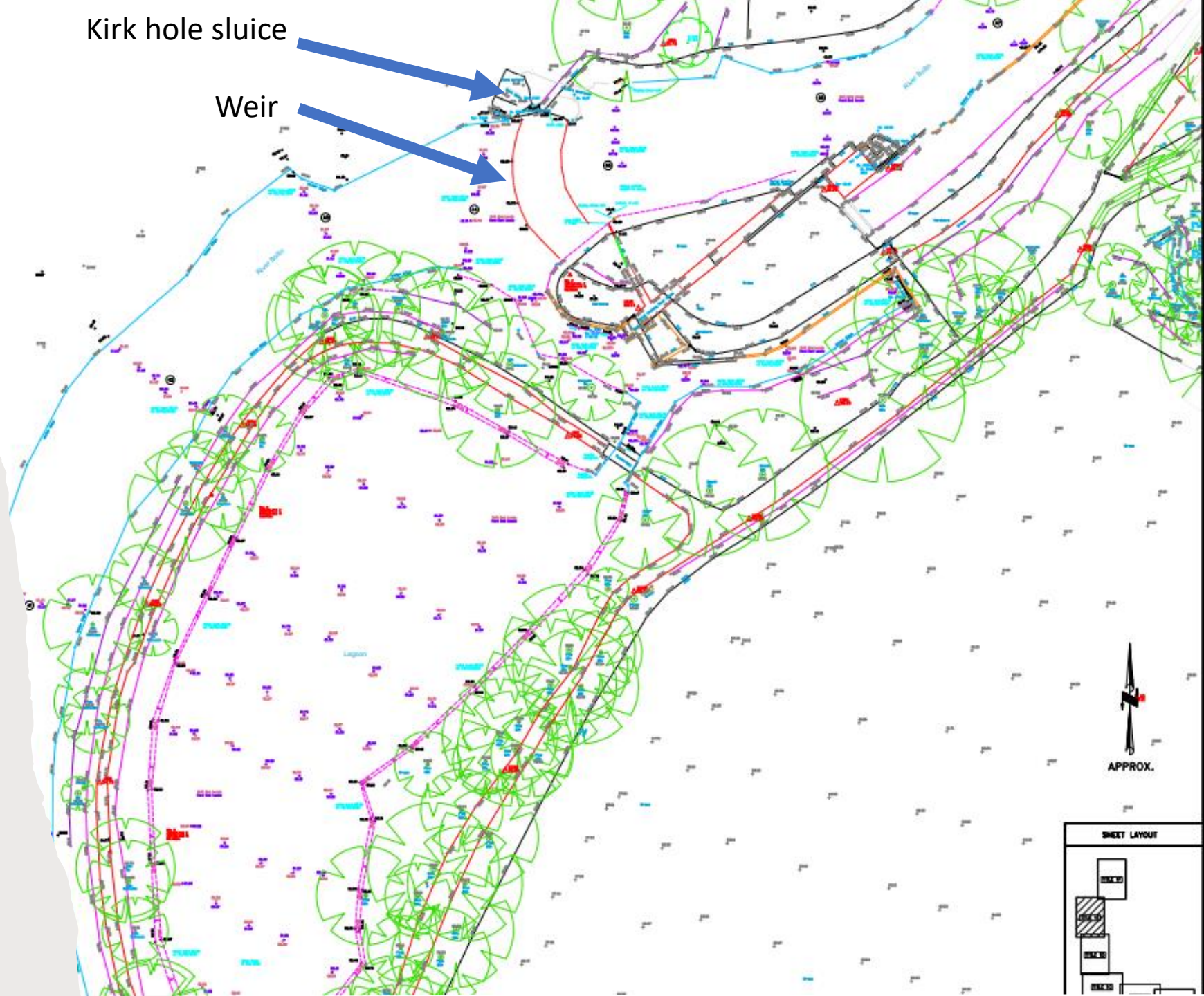
Quay Bank Road

Quay Bank Road

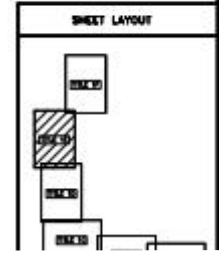
Quay Bank Road

Kirk hole sluice

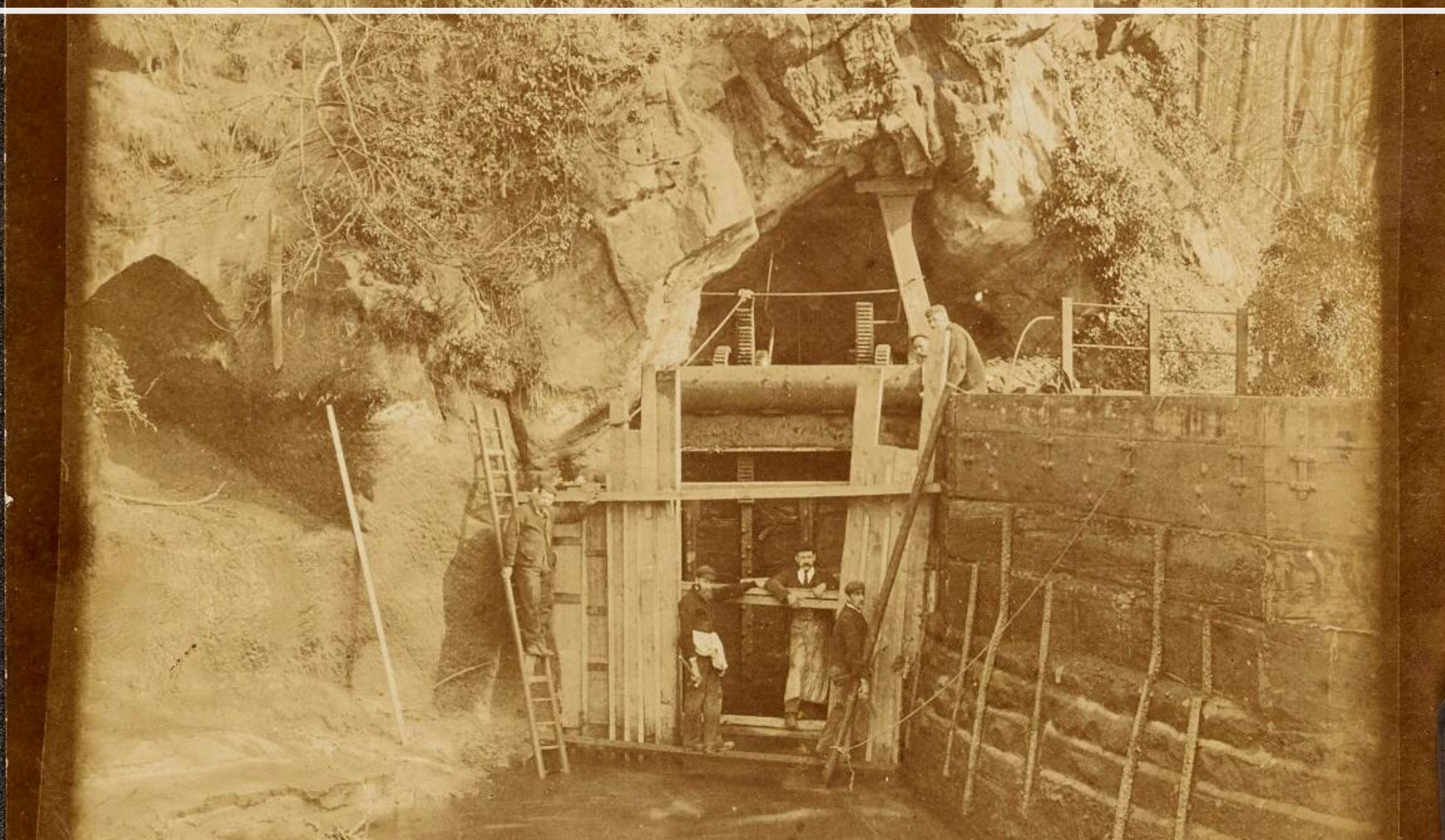
Weir



APPROX.



The solution



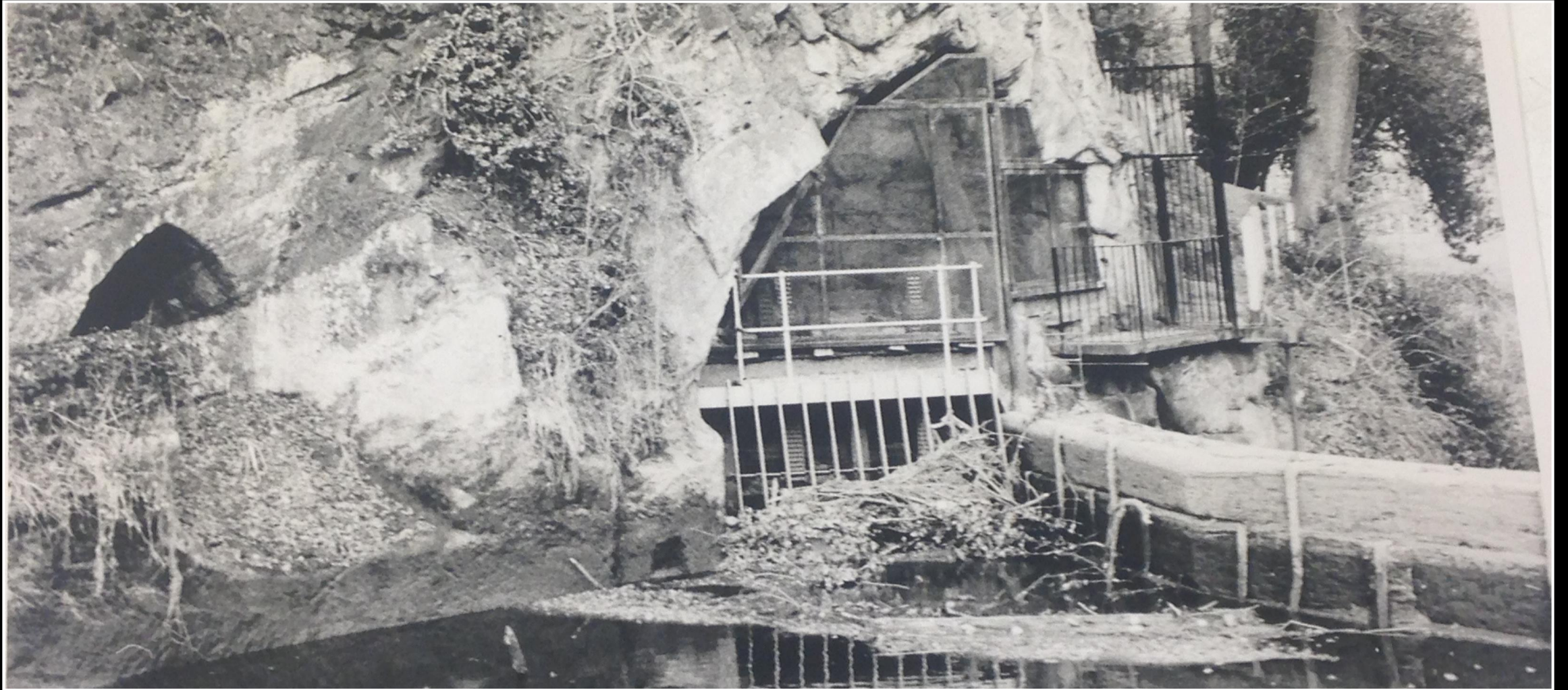
H

I

J

K



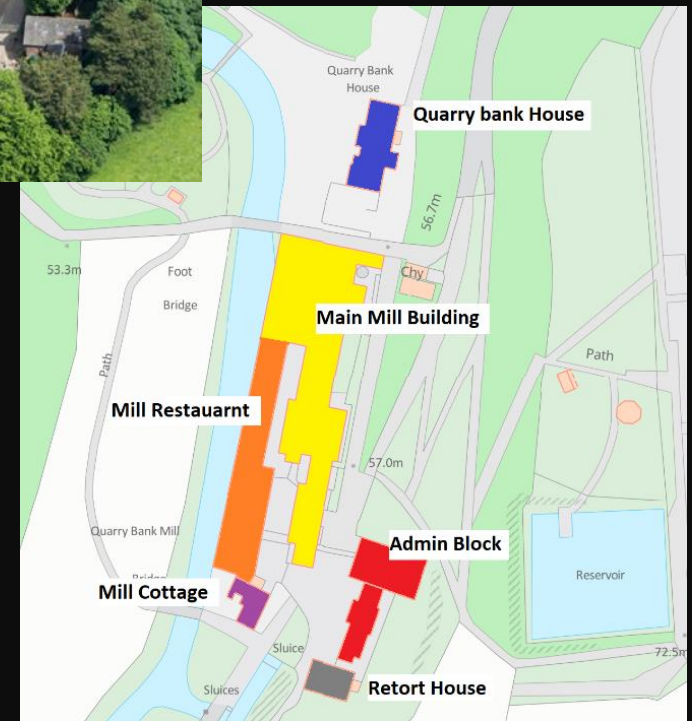


Moral – think long term..... push for funding!



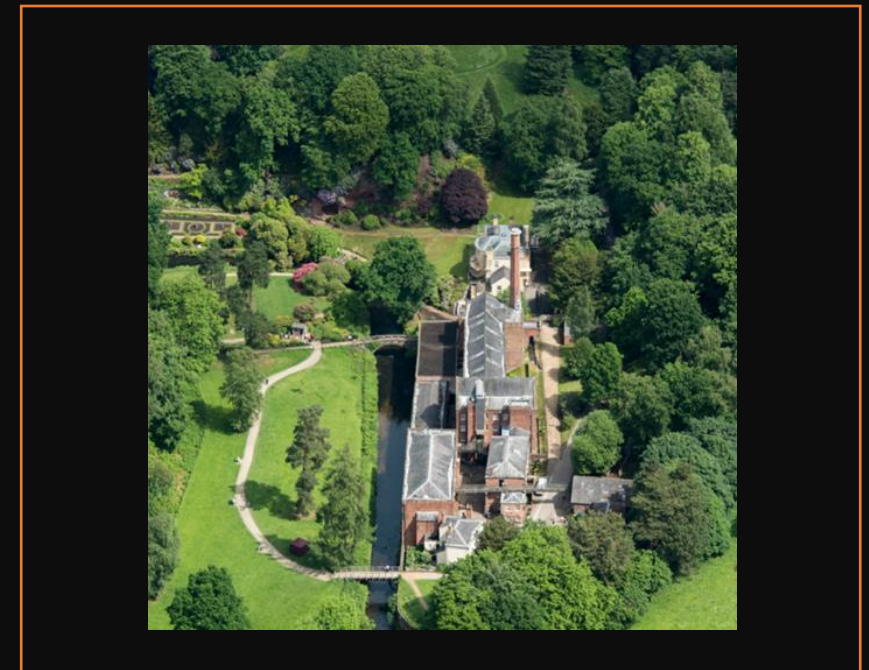
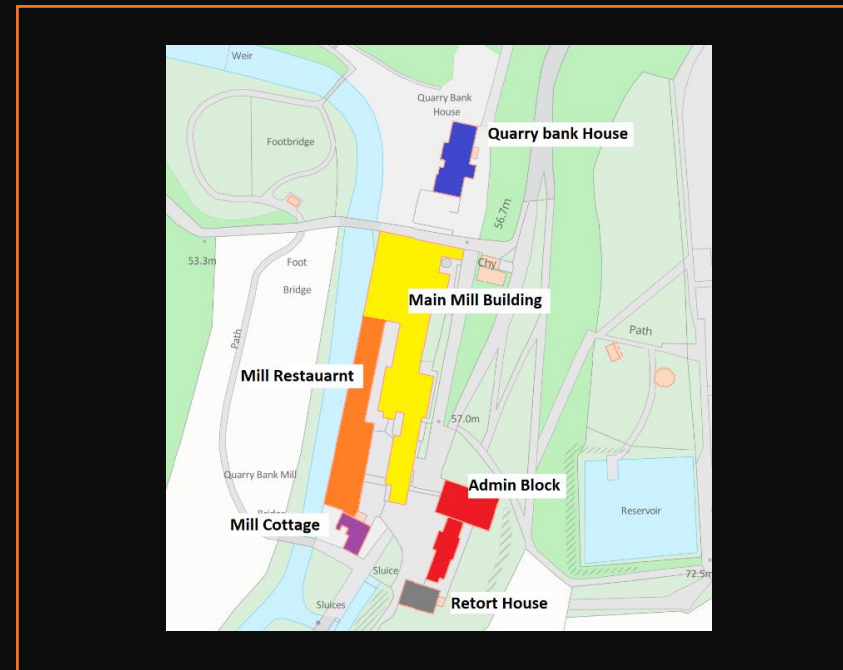
Carbon reduction @ Quarry Bank

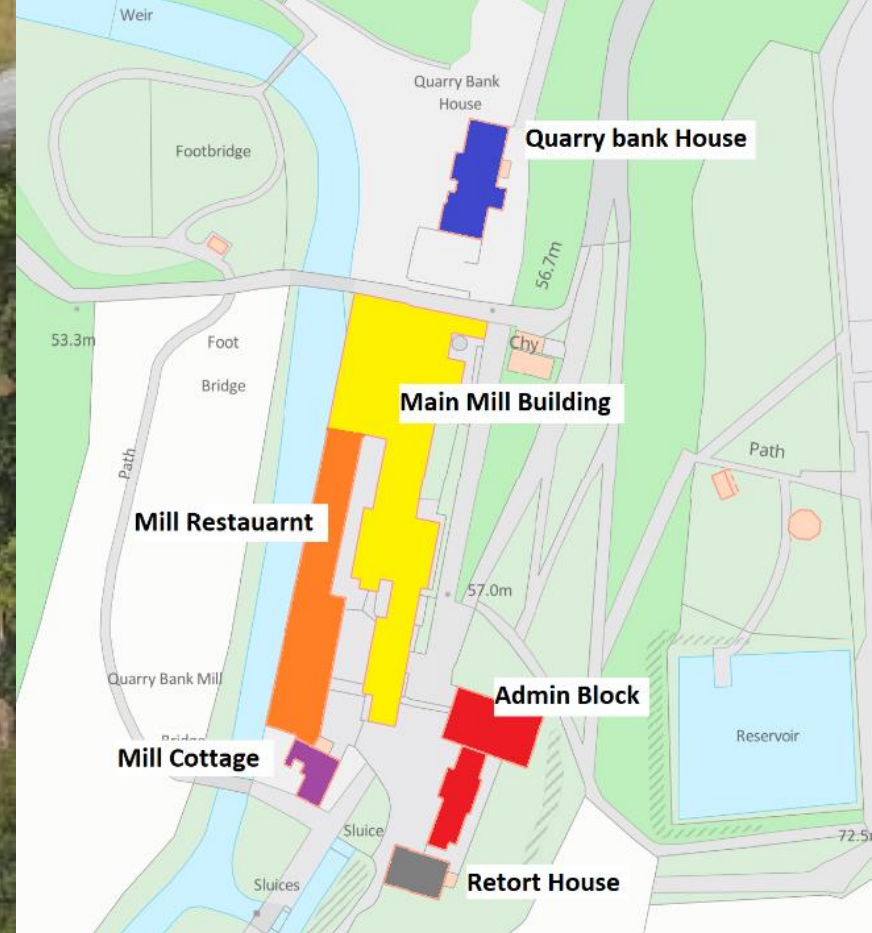
Current energy set up



Current energy set up

- Removal of the following gas-powered heating system and all associated plant:
 - Two Vaillant boilers that serve Mill Restaurant each rated at 112KW (224 KW total)
 - Two Andrews domestic hot water heaters that serve Mill Restaurant, each rated at 19KW (38KW total)
 - One Vaillant system gas boiler that serves Quarry Bank House, rated at 80KW.
 - One Worcester system boiler that serves the Admin Block, rated at 80KW
 - One Vaillant combination boiler that serves Mill Cottage, rated at 27KW.





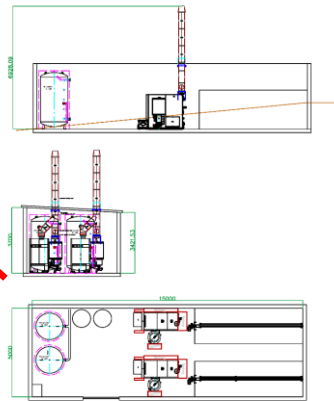
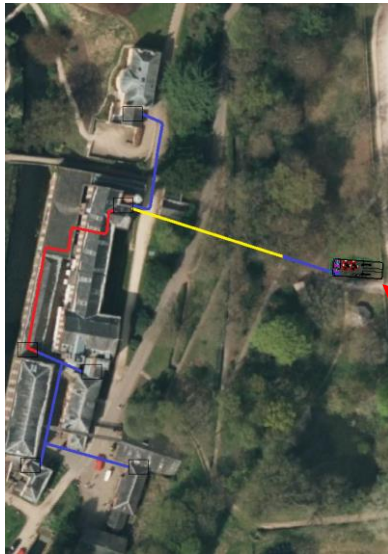
Least impact



Installation of 2 x 250 kW biomass pellet boilers (500 kW total).

These will generate an estimated 617,375 kWh (gross) for heating and hot water and a further 178,016 kWh (gross) for steam to be used by the historic engines.

Total renewable heat of 795,391 kWh



- *Left, example of existing Copperad emitter. Right, proposed replacement to be powered by LTHW*

Thank you



Closing Discussion and Signposting



Sharing Updates

